



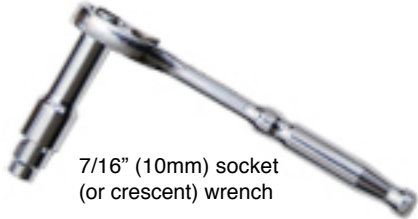
Featuring  
Inter-connected Cooling Efficiency™



Customer Service Assistance Call 720-530-8699

## TRIAD® Panel Installation Procedures

### Tools Needed:



7/16" (10mm) socket  
(or crescent) wrench



Long-handle,  
flat-blade  
Screwdriver

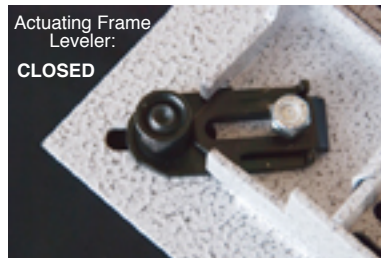


5/32" (5mm)  
Allen wrench

1. Loosen 7/16" (10mm) lock tight nut/nuts and position Actuating Frame Levelers horizontally to desired width to fit securely to adjacent raised floor panels or stringers, re-tighten lock tight nut/nuts. Loose fit will allow panels to shift.



Use socket or  
crescent wrench  
to adjust  
Actuating Frame  
Leveler



Actuating Frame  
Leveler:  
**CLOSED**



Actuating Frame  
Leveler:  
**OPEN**

2. Adjust 5/32" (5mm) Allen leveling screw vertically to match existing raised floor panels traffic surface. Uneven leveling creates potential for trip hazard.



Use Allen key  
to adjust  
leveling screws



Use Allen key to adjust  
leveling screws

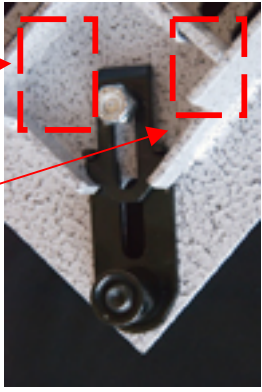


3. Re-verify panel is horizontally secure to adjacent floor panels/stringer system, Allen leveling screw is properly leveled and adequately supported by pedestal head/understructure.

**Caution:** Load ratings will significantly decrease depending upon type of understructure & final vertical/horizontal positioning of Actuating Frame Leveler. Industry standards do not recommend rolling loads over airflow panels without substantial protection or additional panel support.

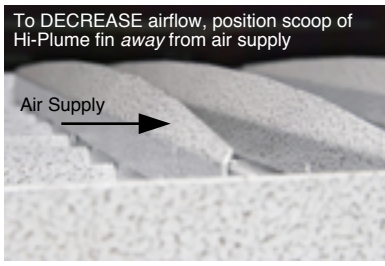
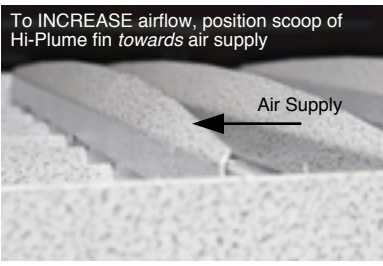
Additional Support is recommended when Actuating Frame Leveler fully extended.

Additional Support Pedestal Location

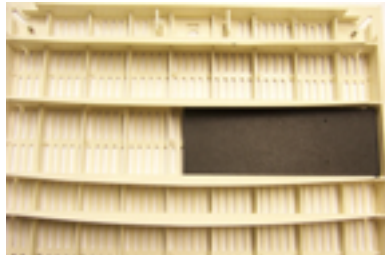
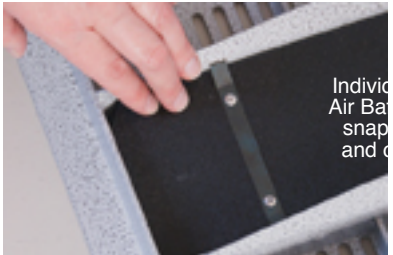


For installations that require Actuating Frame Leveler to be FULLY EXTENDED or REMOVED, additional pedestal support should be added at corners locations as shown. Concentrated load rating decreases to 800 lb. when Actuating Frame Leveler FULLY EXTENDED.

4. Air Stratification Positioning: To improve Upper Server cooling, position scoop of Hi-Plume fin towards source of air supply. To reduce Upper Server cooling, turn scoop of Hi-Plume fin away from source of air supply.

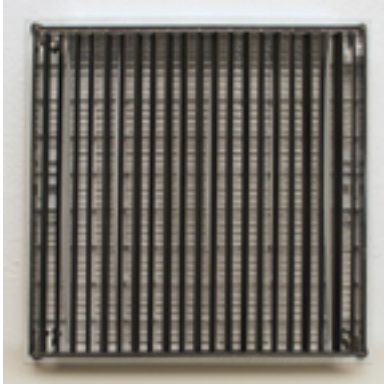


5. Individual Air Baffle: Baffles are available in full row length or half length. Snap in & out.



6. TRIAD OPPOSED BLADE DAMPER Opposed Blade Damper may be mounted by rotating butterfly tab or using threaded screw inside frame insert. Dampers adjustment from top surface by engaging screw driver into rotating adjuster and adjusting to desired setting.





7. TRIAD SLIDE DAMPER Slide damper mounts the same as OPD and adjusts from top surface by use of screw driver.



*\*This copy is provided on a Restricted Basis and is not to be used in any way Detrimental to the Interests of Triad.*

**TRIAD**

Triad Raised Access Floor Company • Fax - 303-526-4902 • Phone - 720-530-8699  
support@triadfloors.com • www.triadfloors.com